



DeliverHealth

eScript One Mobile for iOS v3.28 Release Notes

What's New?

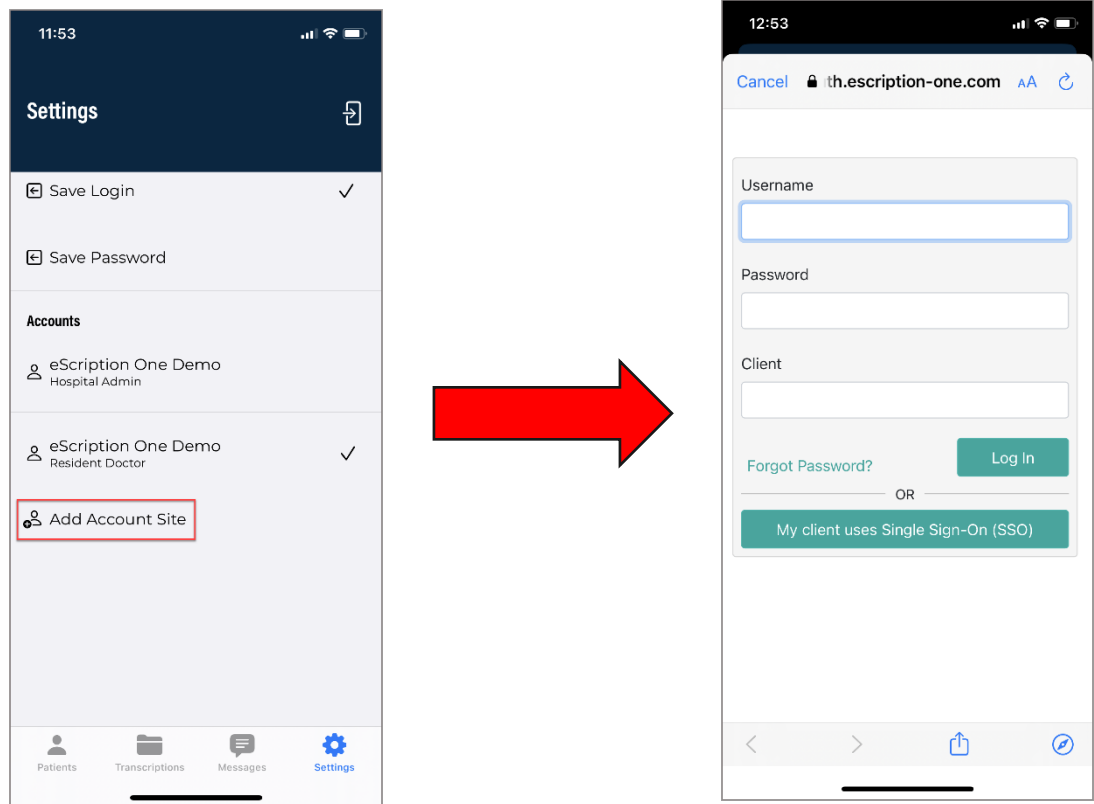
DeliverHealth is pleased to announce eScripton One Mobile for iOS v3.28. This release includes an update to the linked accounts login experience. The app login experience is now utilized when adding or switching linked accounts. This release also includes several minor bug fixes.

Account Linking

A more secured authorization and login process has been implemented when adding and switching linked accounts. Account linking allows users to login to other eSOne profiles in the mobile app without logging out of the app. Now the familiar login screen will be used for linked accounts.

Adding New Linked Accounts

When adding or switching linked accounts, the secure login page will open to add client credentials.



Single Sign-On (SSO) or multi-factor authentication (MFA) can be used, if the client has this enabled.

If the client and user have the password saving feature enabled, accounts can be switched without entering the password.

Note: After upgrading, users will have to re-enter credentials to switch to an existing linked account, even if the password saving feature is enabled. Subsequent switches to the linked account will not require the password when the password saving feature is enabled.

Application Requirements

- Any iOS device with iOS 15.2 or greater. Open 'Settings' and tap 'About' then 'Software Version' to confirm that the OS installed is version 15.2+.
- Internet Access through a wireless Local Area Network (LAN) connection or through a phone service provider. It is strongly recommended to use a Wi-Fi LAN connection when uploading dictations. Minimum bandwidth: LTE/4G data connection; recommended is stable Wi-Fi.
- Communicates over port 443 to <https://mobile.escription-one.com> using TLS 1.2.